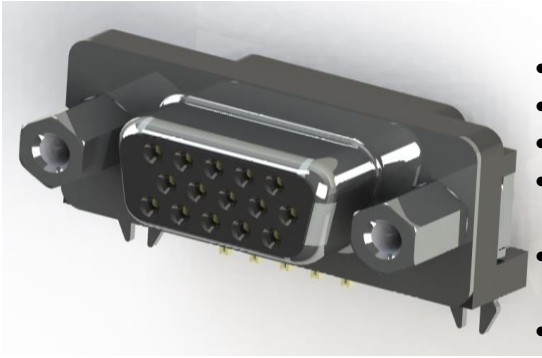




SERIES 631/632: HD D-SUB CONNECTOR

Plug and Receptacle, Right Angle, High Density .125"(3.175mm) Footprint

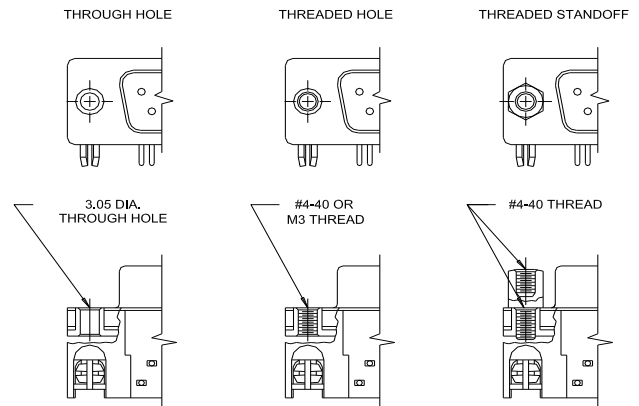
- High Density Three Contact Rows with .121"(3.08mm) Footprint Right Angle Bend
- .090"(2.29mm) Contact Spacing X .078"(1.98mm) Row Spacing
- Plug and Receptacle in 15 Contact Size
- Pin and Socket Contact Mating Design with P.C. Tail Termination
- Metal Shell Provides EMI/RFI Shielding, Plug Shell Indents provide Grounding and Additional Mating Retention
- Board Mounting Features include Two Prong Boardlock for Exceptional Retention to P.C. Board
- Flange Mounting Options for Panel Mount or Connector Mating include Through Hole, Threaded Hole and Threaded Standoffs
- D-Shaped Connector Mating Outline provides Polarization
- Design based on Requirements of MIL-C-24038, EIA RS-232 and RS-449



Specifications:

Insulator Material	Thermoplastic Polyester, UL 94V-0, Chemical Resistant, Color: Black
Contact Material	Plug (Pins): Brass Receptacle (Socket): Brass
Contact Plating	Selective Gold (See Ordering Code) over Nickel for the Mating Area, Tin Plating for Tail Area
Shell Material	Nickel Plated Steel
Current Rating	3A Per Contact
Contact Resistance	25 Milliohms MAX
Insulation Resistance	5000 Megaohms MIN
Dielectric Voltage	1000V AC rms at Sea Level
Operating Temp.	-55°C To +85°C
Total Mating Force	211.6 oz (58.8N) Maximum
Total Unmating Force	42.3 oz (11.8N) Minimum

FLANGE MOUNTING OPTIONS



Ordering Code:

632-015-266-033

SERIES:

631: PLUG (PIN)
632: RECEPTACLE (SOCKET)

NO. OF CONTACTS:

015 - 15 CONTACTS

CONTACT FINISH CODE:

2 - GOLD FLASH PLATING
3 - 15 MICROINCHES OF GOLD PLATING
6 - 30 MICROINCHES OF GOLD PLATING

CONTACT CODE:

66 - .121" (3.08MM) FOOTPRINT CONTACT
73 - 9TH PIN CONTACT RECESSED, BLACK INSULATOR
74 - 9TH PIN CONTACT RECESSED, BLUE INSULATOR

FLANGE MOUNTING OPTIONS:

1 - Ø.120" (Ø3.05MM) THROUGH HOLE
2 - #4-40 THREADED HOLE
3 - #4-40 THREADED STANDOFF
5 - M3 THREADED HOLE

BOARD MOUNTING FEATURE:

0 - NONE
3 - TWO PRONG BOARDLOCKS

MATERIAL CODE:

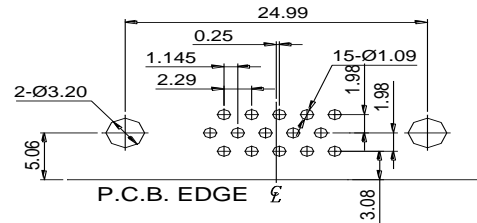
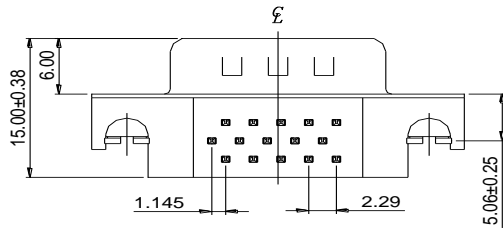
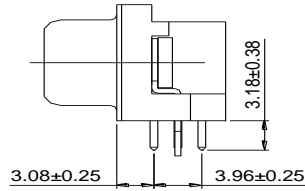
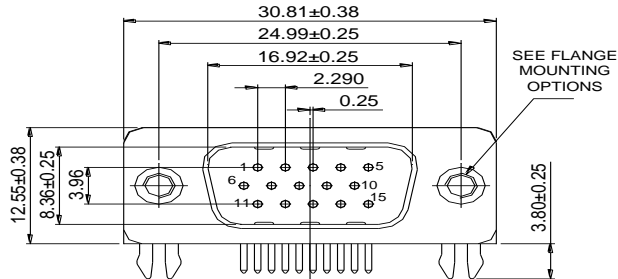
0 - STANDARD
5 - HIGH TEMP INSULATOR



SERIES 631/632: HD D-SUB CONNECTOR

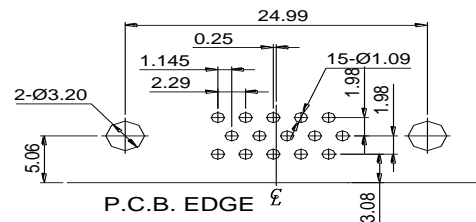
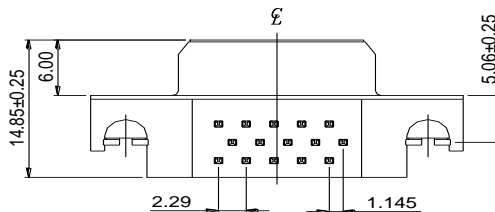
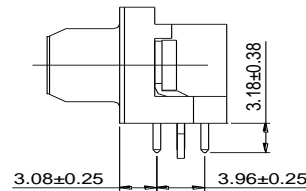
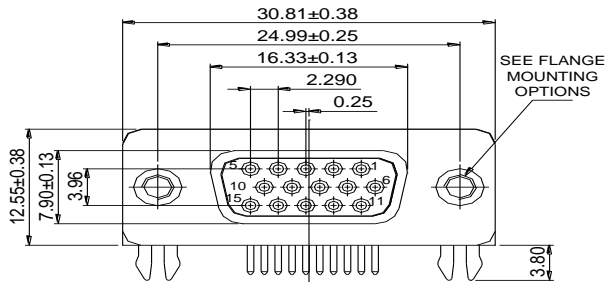
Plug and Receptacle, Right Angle, High Density .125"(3.175mm) Footprint

PLUG 631 SERIES



RECOMMENDED P.C.B. LAYOUT

RECEPTACLE 632 SERIES



RECOMMENDED P.C.B. LAYOUT