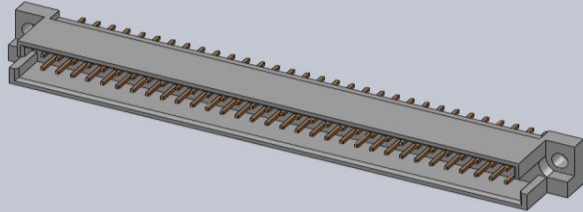




461 SERIES

DIN 41612 CONNECTORS

DIN 41612 CONNECTORS



SERIES 461-164-221 -211

STYLE _____
 NUMBER OF CONTACTS _____
 GOLD PLATING THICKNESS _____
 CONTACT CODE _____
 CONTACT ROW ARRANGEMENT _____
 CONTACT SPACING ARRANGEMENT _____
 MOUNTING OPTIONS _____

STYLE
 1- STANDARD STYLE (STRAIGHT)



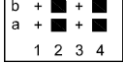
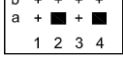
GOLD PLATING THICKNESS
 2- GOLD FLASH
 3- 15 MICROINCHES OF GOLD
 6- 30 MICROINCHES OF GOLD

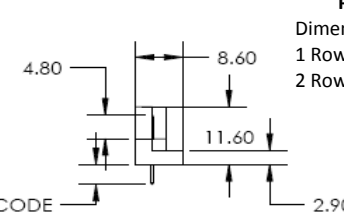
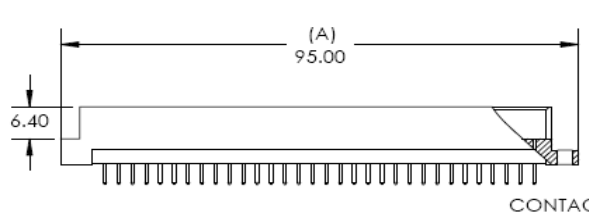
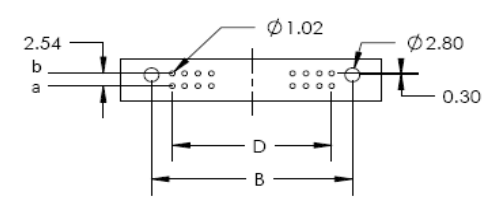
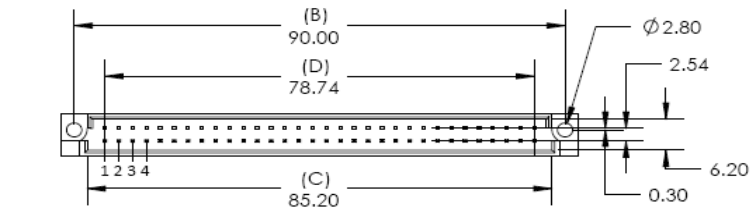
CONTACT CODE
 21- PCB TAIL .157 (4.0) LG.
 22- PCB TAIL .098 (2.5) LG.
 40- W.W. TAIL .512 (13.0) LG.
 41- W.W. TAIL .669 (17.0) LG.
 70- PRESS-FIT TAIL .182 (4.6) LG.
 73- PRESS-FIT TAIL .248 (6.3) LG.
 80- PRESS-FIT, W.W.TAIL .512 (13.0) LG.
 81- PRESS-FIT, W.W.TAIL .669 (17.0) LG.

CONTACT ROW ARRANGEMENT
 1- CONTACTS ON ROW "A"
 2- CONTACTS ON ROW "A" AND "B"

CONTACT SPACING ARRANGEMENT
 1- ROWS FULLY LOADED
 2- EVEN NUMBER LOADED

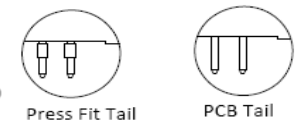
MOUNTING OPTIONS
 1- ϕ .110" (ϕ 2.80mm), THROUGH HOLE

PITCH	NUMBER OF CONTACTS	CONTACT ROW ARRANGEMENT	CONTACT SPACING ARRANGEMENT
2.54MM	64	a b	1- ROWS FULLY LOADED 
	32	a b	
	20	a b	1- ROWS FULLY LOADED 
	32	a -	
	16	a -	
5.08MM	10	a -	2- EVEN NUMBER LOADED 
	32	a b	
	16	a b	2- EVEN NUMBER LOADED 
	10	a b	
	16	a -	
	8	a -	
	5	a -	



P.C. BOARD PATTERN

Dimension D at 2.54 Pitch:
 1 Row: D= No. of Positions-1 X 2.54
 2 Rows: D= (No. of Positions/2)-1 X 2.54



Features:

- High density 64 Contact 2 Row Metal-to-Metal Connector on 2.54mm (.100") Grid
- Contact Material and Finish: Brass with selective gold plating: and tin on tails:
 CLASS 3: 2- Gold Flash Plating
 CLASS 2: 3- 15u" of Gold Plating
 CLASS 1: 6- 30u" of Gold Plating
- Contact Tails: 0.6 x 0.5mm (.024" x .020")
- Contact Spacing: 2.54 x 2.54mm (.100" x .100") single or double rows; or 2.54 x 5.08mm (.100" x .200") single or double rows
- Available in: 5, 8, 10, 16, 20, 32, and 64positions
- Connectors designed to meet DIN 41612-Q (Male) specifications

Specifications:

- Current Rating: 2 Amperes @ 20°C
- Contact Material: Brass
- Contact Plating: Selective Gold Plating
- Contact Resistance: 30 milliohms, maximum
- Insulator Material: 30% Glass Filled PBT, UL 94V-0
- Insulation Resistance: Mated - 1000 Mega (10⁶) ohms
- Dielectric Withstanding Voltage: 1000 V.A.C RMS
- Basic Grid: 2.54mm (.100")
- Operating Temperature: -55°C to +105°C