



161 Alden Road, Units 7 & 8, Markham, Ontario Canada L3R 3W7

Tel: +1 416 754-3322

Fax: +1 416-754-3299

Email: info@edac.net

http://www.edac.net

ENGINEERING CHANGE NOTICE

Originator:	Bo Byoung Jeon	Date:	August 29, 2023	Document Number	ECN20230829-00
Phone No.	(416) 754-3322	Part Number	B10-029-266-032	Drawing Revision	Rev.17
Email Address:	bbjeon@edac.net				
Department	ENGINEERING				

CHANGE TYPE

- CLASS I Customer notification and approval required prior to implementation
- CLASS II Customer notification only, no approval required
- CLASS III No customer notification required

REASON OF CHANGE

Material changes from LCP to PBT for productivity. There is ZERO impact on the functionality of the part because of this change.

DESCRIPTION OF CHANGE:

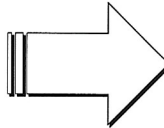
Material changes from LCP to PBT

Revision 16

Revision 17

1. MATERIAL:

Housing:LCP, UL 94V-0, Color:Ivory.
 Latch:LCP, UL 94V-0, Color:Ivory.
 Terminal:Copper Alloy.
 Shell:SPCC.
 Rivet:Copper Alloy.



1. MATERIAL:

Housing:PBT, UL 94V-0, Color:Ivory.
 Latch:PBT, UL 94V-0, Color:Ivory.
 Terminal:Copper Alloy.
 Shell:SPCC.
 Rivet:Copper Alloy.

2. Effective implementation to distribution is on August 29, 2023

Note: N/A

PARTIES AFFECTED

- Customer
- Distributors
- Suppliers

- NORCOMP
- MH
- ETW

- ECA
- EDG
- EDAC UK

KEY TARGET DUE DATES IF CHANGE IS APPROVED TO PROCEED (check if applicable and show target dates as known)

- Submit Quote _____
- Prod. Trial Run _____
- Run at Rate _____
- PPAP from Supplier _____
- MRD of Production Parts _____

ACKNOWLEDGEMENT FOR ECN INITIATION: (OPTIONALS)

Tooling Rep	_____	<input type="checkbox"/>	Process Eng Rep	_____
Mfg Eng Rep	_____	<input type="checkbox"/>	Facilities Rep	_____
Production Rep	_____	<input type="checkbox"/>	Sales Rep.	_____
Materials Rep	_____	<input type="checkbox"/>	Product Eng. Rep.	Jacky Lai
Quality Rep	Bo Byoung Jeon	<input type="checkbox"/>	Purchasing Rep	_____

STATUS

APPROVED

CCS CHANGE REQUEST #

APPROVALS FOR ECN INITIATION (REQUIRED)

Vice President Bob Sakitkovski

Engineering Manager Ronnie Sta. Ronnie Sta.
 Monica

Business Development Manager Kobie Samuels

Quality Engineer Bo Byoung Jeon

Mechanical Engineer _____

Digitally signed by Bo Byoung Jeon
 DN: cn = Bo Byoung Jeon, o = EDAC Inc., email = info@edac.net, c = CA, c = EDAC Inc. OUI = 00000000
 Date: 2023.08.29 10:23:21 -0500

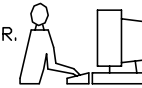
REJECTED

Change REJECTED by:

Rejected Date:

MINIMUM OF TWO SIGNATURES REQUIRED

THIS IS A C.A.D. GENERATED DRAWING
DO NOT MAKE MANUAL REVISIONS TO MASTER.



ISSUE NUMBER

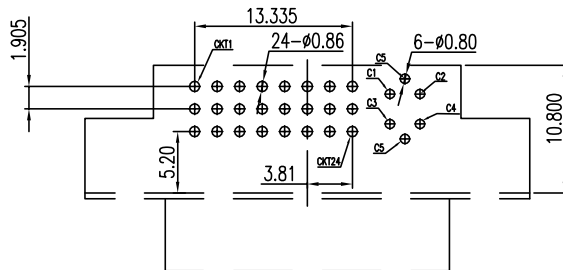
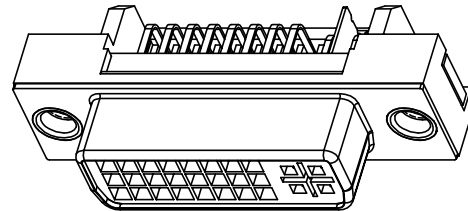
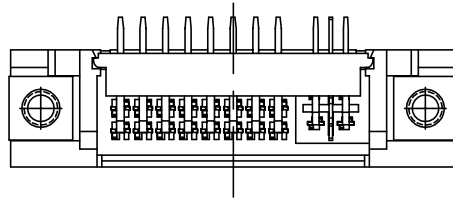
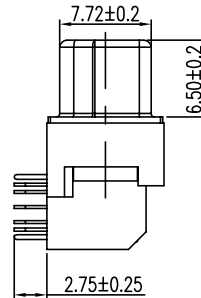
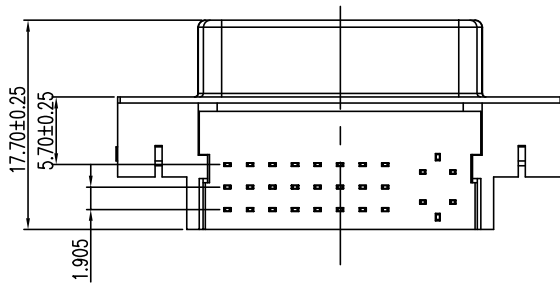
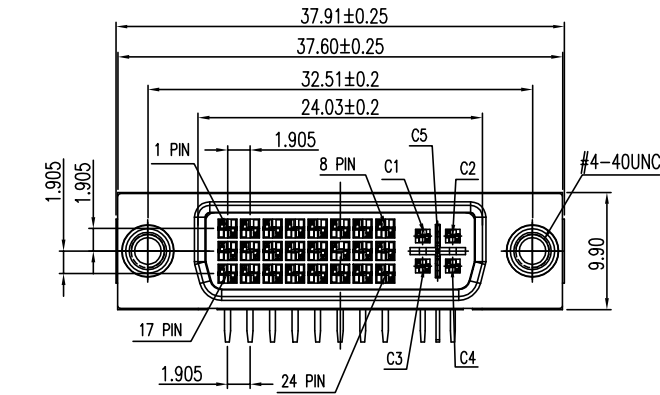
ORIGINAL	①
DIM. .683(17.35) WAS .679(17.14) F.BRIONES OCT.17/02	②
BOARDLOCK DETAIL CHANGED R.BLAKEY NOV.28/03	③
RE-DESIGN; RoHS STATEMENT ADDED. F.BRIONES NOV.23/05	④
NOTE 6 ADDED F.BRIONES DEC.16/05	⑤
THREADED RIVET ADDED F.BRIONES AUG. 11/06	⑥
INSULATOR UNDERCUT FOR RIVET ADDED R.BLAKEY JUN. 14/07	⑦
CURRENT RATING, CONTACT RESISTANCE, DWV AND INSULATION RESISTANCE WAS 5 AMPS, 30 MILLIOHMS, 1000 VAC AND 5000 MEGOHMS F.BRIONES OCT.29/07	⑧
HOLES LOCATIONS ADDED F.BRIONES JUN. 17/08	⑨
BOTTOM INSULATOR CHANGE F.BRIONES FEB. 17/09	⑩
DIM. 1.465 WAS 1.450 F.BRIONES NOV.01/11	⑪
DIM. .720(18.29) WAS .683(17.35) NEW TOOLING F.BRIONES OCT.15/12	⑫
UPDATE MATERIAL & ELECTRICAL CHARACTERISTICS R.STA.MONICA JAN.21/2013	⑬
NEW TOOLING F.BRIONES OCT.28/13	⑭
UPDATE DWG. P.M. FEB. 26/2020	⑮
BOARDLOCK REMOVED P.M. APR. 07/2020	⑯
PBT WAS LCP J.L. AUG. 29/2023	⑰

SPECIFICATIONS

1. DVI
- 1.1 Voltage: 40 VAC(RMS) Max.
- 1.2 Current Rating: 1.5 Ampere per Contact
- 1.3 Contact Resistance: 20 Milliohms Max.
- 1.4 Insulation Resistance: 1000 Megohms Min.
- 1.5 Dielectric Withstanding Voltage: 500V DC(RMS)
- 1.6 Total Mating Force: 4.5 Kgf Max.
- 1.7 Total Unmating Force: 1.0 Kgf Min.
- 1.8 Operating Temperature: -55°C to +85°C

NOTES

1. MATERIAL:
 - Housing:PBT, UL 94V-0, Color:Ivory.
 - Latch:PBT, UL 94V-0, Color:Ivory.
 - Terminal:Copper Alloy.
 - Shell:SPCC.
 - Rivet:Copper Alloy.
2. FINISH:
 - Terminal:Gold Plated over Nickel at Contact Area.
 - Tin Plated over Nickel at Solder Area.
 - Shell:Nickel Plated.
 - Rivet:Nickel Plated.
3. This Product is RoHs Compliance Product.



RECOMMENDED P.C.B LAYOUT

DVI-I RECEPTACLE R/ANGLE CONNECTOR
FOR DIGITAL-ANALOG INTERFACE
WITHOUT BOARDLOCKS



EDAC INC
TORONTO, ONTARIO
CANADA

YOUR CONNECTION TO QUALITY & SERVICE

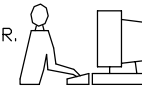
THESE DRAWINGS AND SPECIFICATIONS
ARE THE PROPERTY OF EDAC INC., AND
SHALL NOT BE REPRODUCED, OR COPIED
OR USED AS THE BASIS FOR THE
MANUFACTURE OR SALE OF APPARATUS
WITHOUT WRITTEN PERMISSION.

ACAD REFERENCE NO: B10-029-266-032	
DRAWN: F.BRIONES	DATE: SEP.25/02
CHECKED: R.S.M.	DATE: AUG.29/23
SCALE: N.T.S.	SHEET 1 OF 1
DRAWING NUMBER: B10-029-266-032	ISSUE
PART NUMBER: B10-029-266-032	17



THIS SERIES FULLY CONFORMS TO
THE EUROPEAN UNION DIRECTIVES
2011/65/EU FOR RoHS COMPLIANCY.

THIS IS A C.A.D. GENERATED DRAWING
DO NOT MAKE MANUAL REVISIONS TO MASTER.



ISSUE NUMBER

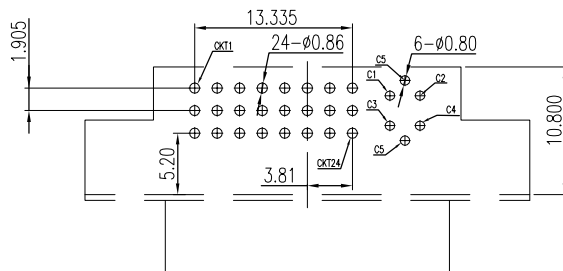
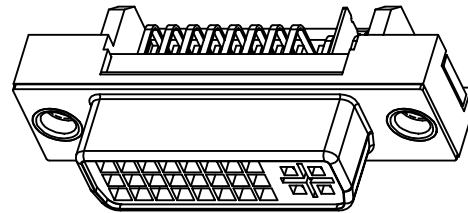
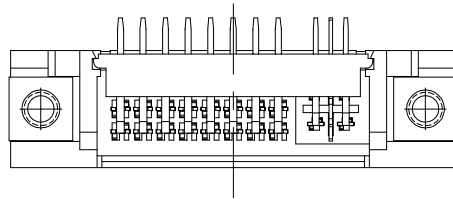
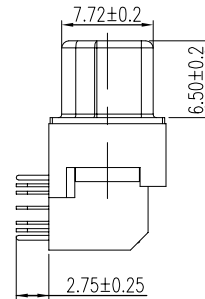
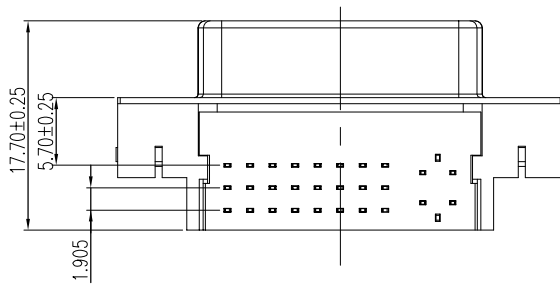
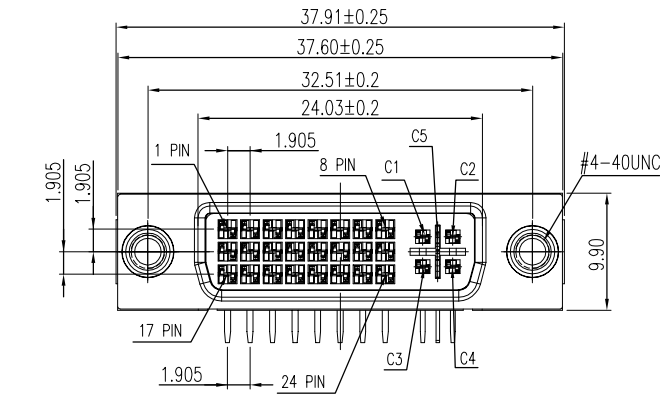
ORIGINAL	①
DIM. .683(17.35) WAS .679(17.14) F.BRIONES OCT.17/02	②
BOARDLOCK DETAIL CHANGED R.BLAKEY NOV.28/03	③
RE-DESIGN; RoHS STATEMENT ADDED. F.BRIONES NOV.23/05	④
NOTE 6 ADDED F.BRIONES DEC.16/05	⑤
THREADED RIVET ADDED F.BRIONES AUG. 11/06	⑥
INSULATOR UNDERCUT FOR RIVET ADDED R.BLAKEY JUN. 14/07	⑦
CURRENT RATING, CONTACT RESISTANCE, DWV AND INSULATION RESISTANCE WAS 5 AMPS, 30 MILLIOHMS, 1000 VAC AND 5000 MEGOHMS F.BRIONES OCT.29/07	⑧
HOLES LOCATIONS ADDED F.BRIONES JUN. 17/08	⑨
BOTTOM INSULATOR CHANGE F.BRIONES FEB. 17/09	⑩
DIM. 1.465 WAS 1.450 F.BRIONES NOV.01/11	⑪
DIM. .720(18.29) WAS .683(17.35) NEW TOOLING F.BRIONES OCT.15/12	⑫
UPDATE MATERIAL & ELECTRIC/ CHARACTERISTICS R.STA.MONICA JAN.21/2013	⑬
NEW TOOLING F.BRIONES OCT.28/13	⑭
UPDATE DWG. P.M. FEB. 26/2020	⑮
BOARDLOCK REMOVED P.M. APR. 07/2020	⑯

SPECIFICATIONS

1. DVI
- 1.1 Voltage: 40 VAC(RMS) Max.
- 1.2 Current Rating: 1.5 Ampere per Contact
- 1.3 Contact Resistance: 20 Milliohms Max.
- 1.4 Insulation Resistance: 1000 Megohms Min.
- 1.5 Dielectric Withstanding Voltage: 500V DC(RMS)
- 1.6 Total Mating Force: 4.5 Kgf Max.
- 1.7 Total Unmating Force: 1.0 Kgf Min.
- 1.8 Operating Temperature: -55°C to +85°C

NOTES

1. MATERIAL:
 - Housing:LCP, UL 94V-0, Color:Ivory.
 - Latch:LCP, UL 94V-0, Color:Ivory.
 - Terminal:Copper Alloy.
 - Shell:SPCC.
 - Rivet:Copper Alloy.
2. FINISH:
 - Terminal:Gold Plated over Nickel at Contact Area.
 - Tin Plated over Nickel at Solder Area.
 - Shell:Nickel Plated.
 - Rivet:Nickel Plated.
3. This Product is RoHS Compliance Product.



RECOMMENDED P.C.B LAYOUT

DVI-I RECEPTACLE R/ANGLE CONNECTOR
FOR DIGITAL-ANALOG INTERFACE
WITHOUT BOARDLOCKS



EDAC INC
TORONTO, ONTARIO
CANADA

YOUR CONNECTION TO QUALITY & SERVICE

THESE DRAWINGS AND SPECIFICATIONS
ARE THE PROPERTY OF EDAC INC., AND
SHALL NOT BE REPRODUCED, OR COPIED
OR USED AS THE BASIS FOR THE
MANUFACTURE OR SALE OF APPARATUS
WITHOUT WRITTEN PERMISSION.

ACAD REFERENCE NO: B10-029-266-032	
DRAWN: F.BRIONES	DATE: SEP.25/02
CHECKED: R.S.M.	DATE: APR. 07/2020
SCALE: N.T.S.	SHEET 1 OF 1
DRAWING NUMBER: B10-029-266-032	ISSUE
PART NUMBER: B10-029-266-032	16



THIS SERIES FULLY CONFORMS TO
THE EUROPEAN UNION DIRECTIVES
2011/65/EU FOR RoHS COMPLIANCY.