



516 SERIES SHIELDED METAL COVER

ORDERING GUIDE:

516 - 235 - 156

SERIES

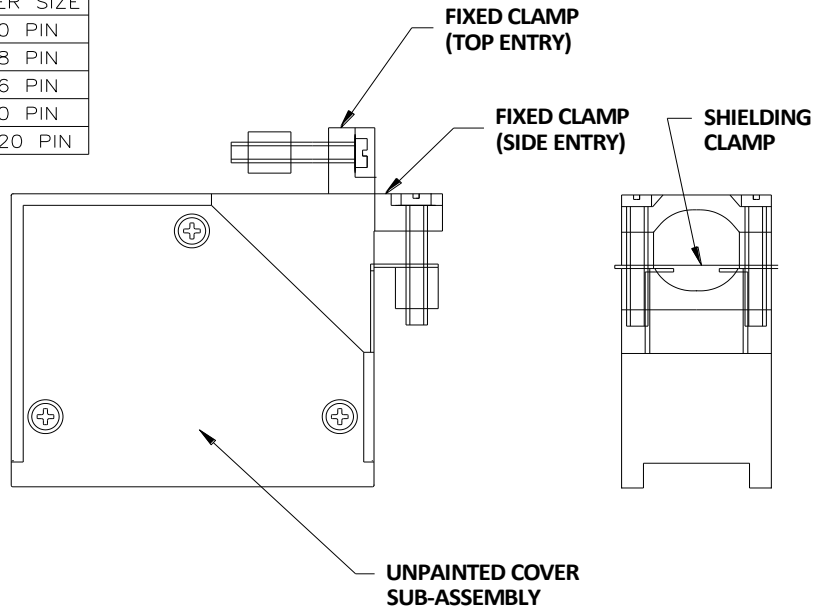
SHIELDED COVER IDENTIFICATION CODE

COVER TYPE

COVER SIZE

CODE	COVER SIZE
20	20 PIN
38	38 PIN
56	56 PIN
90	90 PIN
12	120 PIN

CODE	ENTRY STYLE	THREAD TAP
1	SIDE	METRIC
3	TOP	METRIC
5	SIDE	UNIFIED
7	TOP	UNIFIED



NOTE:
PACKAGING TO PREVENT PLATING SCRATCHES AND SCRAPES IS REQUIRED.

COMPONENTS CHART

SHIELDED COVER PART NUMBER		UNPAINTED COVER SUB-ASSEMBLY		SHIELDING CLAMP	
SHIELDED COVER PART NUMBER	QUANTITY	UNPAINTED COVER SUB-ASSEMBLY	QUANTITY	SHIELDING CLAMP	QUANTITY
	1	516-234-121			
	1	516-234-139			
		516-234-157	1		
		516-234-191		1	
		516-234-113			1
		516-234-421	1		
		516-234-439		1	
		516-234-457			1
		516-234-491			1
	1	516-234-413			
		516-234-621	1		
		516-234-639		1	
		516-234-657			1
		516-234-691			1
		516-234-613			1
		516-234-821			1
		516-234-839			1
		516-234-857			1
		516-234-891			1
		516-234-813			1
		516-237-120			1
	1	516-237-138		1	
	1	516-237-190			1
		516-237-112			1
516-235-120					
516-235-138					
516-235-156					
516-235-190					
516-235-112					
516-235-320					
516-235-338					
516-235-356					
516-235-390					
516-235-312					
516-235-520					
516-235-538					
516-235-556					
516-235-590					
516-235-512					
516-235-720					
516-235-738					
516-235-756					
516-235-790					
516-235-712					