

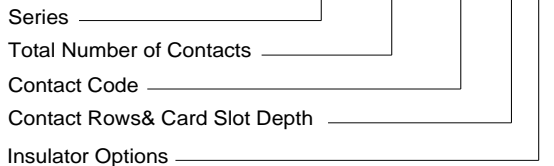
FEATURES:

- UL Recognized
- .125(3.18) Contact Spacing x .250(6.35) Row Spacing
- Accepts .062(1.57) Nominal Thickness P.C. Board
- Low Profile Insulator Body
- Compliant Section For Gas Tight reliable connection in plated through holes eliminates soldering operation
- Contacts Termination Options include P.C. Tail and .025(0.64) Square Wire Wrap
- Single or Dual Row Configurations
- Accepts Between Contacts and In-Contact Polarizing Keys
- Tools Available for Insulator a
- and Contact Removal Simple "Flat Rock" Tooling is Used for Connector Installation

Specifications:

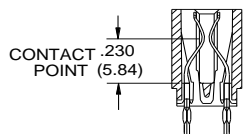
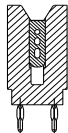
Insulator Material	Thermoplastic Polyester, UL 94V-0, Black Color
Contact Material	Copper, Nickel, Tin Alloy, Phosphor Bronze
Contact Plating	30 Microinches(0.76 Microns) Gold on the Mating Area, Tin on the Compliant Section and Contact Tails, Nickel Underplate. Other plating options Available upon Request.
Current Rating	3 Amperes Continuous
Dielectric Withstanding Voltage	1500 v AC rms at Sea Level Between Adjacent Contacts
Insulation Resistance	5000 Megohms Minimum
Operating Temperature	+65 to +105 Degrees C
Daughter Board Insertion Force	16oz (4.45N) Maximum per Contact Pair when Tested with a .070 (1.78) Thick Gauge
Daughter Board Withdrawl Force	1oz (0.28N) Minimum per Contact Pair when Tested with a .054 (1.37) Thick Gauge
Contact Insertion Into Hole	20 lbs (89N) Maximum
Contact Retention in Hole	10 lbs (44N) Minimum
Re-Insertability of Hole	3 Times Minimum

Example Part Number: **726-070-525-601**



**IN-CONTACT
POLARIZING KEY**
P/N 745-240-328

**BETWEEN CONTACT
POLARIZING KEY**
P/N 306-240-318



CODE 201
CONTACT POINT 726 SERIES

Series: 726

Total Number of Contacts

005, 006, ..., 060
010, 012, ..., 120

Contact Rows

Single Row
Dual Row

Contact Code	Description & Contact Point	Tail Length "G"
520	P.C. Tail .Regular Point	.175 (4.45)
525	P.C. Tail High Point	.175 (4.45)
527	P.C. Tail High Point	.375 (9.53)
540	Wire Wrap Regular Point	.560 (14.22)
541	Wire Wrap Regular Point	.750 (19.05)
545	Wire Wrap High Point	.560 (14.22)
553	Wire Wrap Medium Point	.702(17.83)

Contact Rows & Card Slot Depth

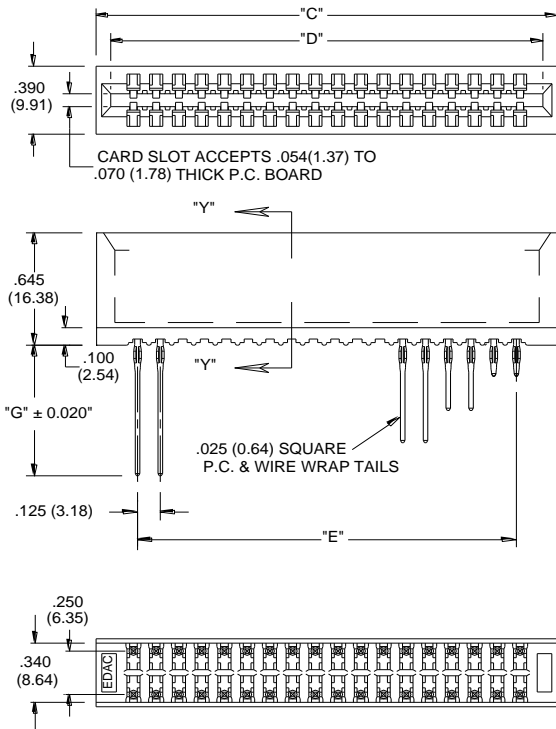
Contact Rows	Description
1	Single Row, .420 (10.70) Slot Depth
2	Dual Row, .420 (10.70) Slot Depth

Insulator Options

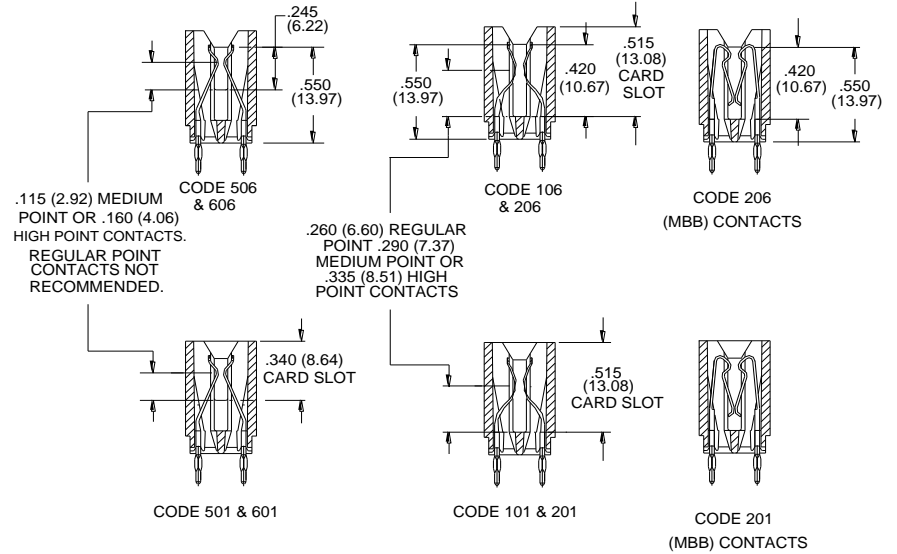
Insulator Options	Description
01	.550 (13.97) Full Height Ends

Ordering Code Notes

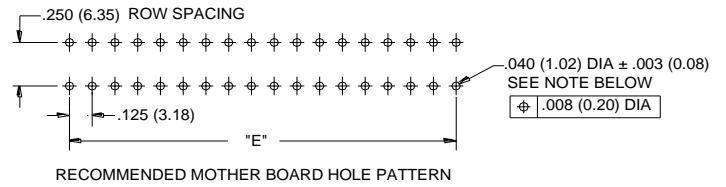
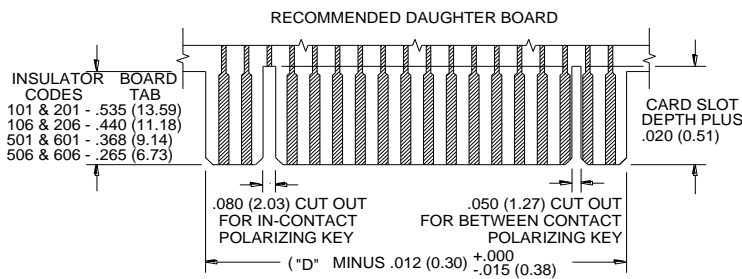
1) All connector sizes up to 60 contacts single row/ 120 contacts dual row are available upon request



SECTION "Y" - "Y" CONTACT ROWS & INSULATOR OPTIONS



MBB CONTACTS
 MUST BE USED IN PAIRS AND IN INSULATOR AND CARD SLOT DEPTH OPTION SHOWN
 NOT AVAILABLE FOR 726 SERIES



TO OBTAIN OPTIMUM COMPLIANT SECTION PERFORMANCE,
 DRILL HOLES .0453 ± .001 (1.15 ± 0.03) DIAMETER
 COPPER PLATE, .001 (25.4 MICRONS) MINIMUM THICKNESS,
 FOLLOWED BY TIN PLATE TO PROVIDE FINISHED
 HOLES .040 ± .003 (1.02 ± 0.08) DIAMETER

Single Row Versions May Require Backup Springs Depending upon the Application.

NUMBER OF CONTACTS		"C"		"D"		"E"	
Single	Double	Inch	mm	Inch	mm	Inch	mm
5	10	0.910	23.11	0.750	19.05	0.500	12.70
6	12	1.035	26.29	0.875	22.23	0.625	15.88
15	30	2.160	54.86	2.000	50.80	1.750	44.45
18	36	2.535	64.39	2.375	60.33	2.125	53.98
22	44	3.035	77.09	2.875	73.03	2.625	66.68
25	50	3.410	86.61	3.250	82.55	3.000	76.20
28	56	3.785	96.14	3.625	92.08	3.375	85.73
30	60	4.035	102.49	3.875	98.43	3.625	92.08
35	70	4.660	118.36	4.500	114.30	4.250	107.95
36	72	4.785	121.54	4.625	117.48	4.375	111.13
40	80	5.285	134.24	5.125	130.18	4.875	123.83
43	86	5.660	143.76	5.500	139.70	5.250	133.35
50	100	6.535	165.99	6.375	161.93	6.125	155.58
60	120	7.785	197.74	7.625	193.68	7.375	187.33