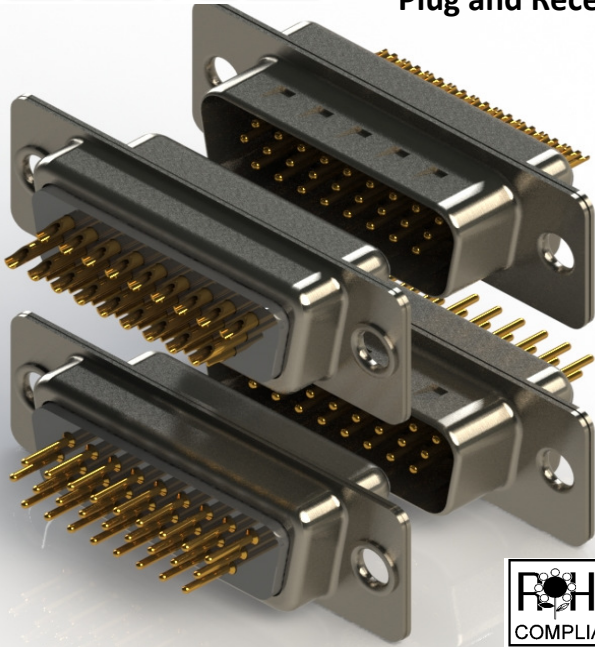




SERIES 637M/638M HD D-SUB CONNECTOR

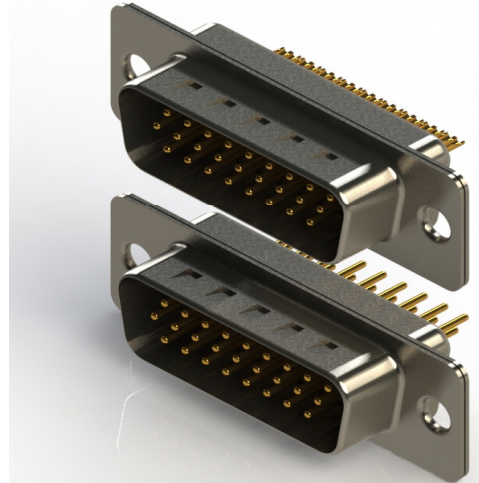
Plug and Receptacle, Vertical, High Density, PCB Mount, Metal Body



- High Density With Machined Contacts
- 0.090" (2.29mm) Contact Spacing X 0.078" (1.98mm) Row Spacing
- Plug and Receptacle in 15, 26, 44 or 62 Contact Sizes
- Pin and Socket Contact Mating Design with P.C. Tail Termination
- Metal Shell Provides EMI/RFI Shielding, Plug Shell Indents provide Grounding and Additional Mating Retention
- Grounding Features include Ground Plates and Two Prong Boardlock for Exceptional Retention to P.C. Board
- Mounting Options for Panel Mount or Connector Mating include Through Hole, Threaded Inserts Boardlocks and Removable of Fixed Threaded Standoffs
- D-Shaped Connector Mating Outline provides Polarization

Specifications:

| | |
|-----------------------|--|
| Insulator Material | PA9T, UL 94V-0, Color: Black or White (PA6T, UL 94V-0 for 62 Contacts) |
| Contact Material | Copper Alloy |
| Contact Plating | Gold Plating Over Nickel |
| Ferrite Specs: | 20dB MIN @30 MHz, 30dB MIN @50 MHz, and 50dB MIN @100 MHz |
| Shell Material | Nickel Plated Steel |
| Current Rating | 5A Per Contact |
| Contact Resistance | 10 Milliohms MAX |
| Insulation Resistance | 5000 Megohms MIN |
| Dielectric Voltage | 1000V AC rms at Sea Level |
| Operating Temp. | -55°C To +125°C |



Ordering Code:

637-M15-230-BN1

SERIES: _____
 637: PLUG (PIN)
 638: RECEPTACLE (SOCKET)

MACHINED CONTACTS _____

NO. OF CONTACTS: _____
 015 - 15 CONTACTS 026 - 26 CONTACTS
 044 - 44 CONTACTS 062 - 62 CONTACTS

CONTACT FINISH CODE: _____
 2 - GOLD FLASH PLATING
 3 - 15 MICROINCHES OF GOLD PLATING
 6 - 30 MICROINCHES OF GOLD PLATING

CONTACT CODE: _____
 30 - P.C.B. TAIL 5.90 (0.232) LONG
 32 - SOLDER CUP

MOUNTING & GROUNDING OPTIONS:

- 1 - Ø 3.05 (0.120) THRU HOLE
- 2 - 4-40 UNC INSERT
- 3 - 4-40 UNC INSERT + BOARD SPACER
- 4 - 4-40 UNC INSERT + BOARD SPACER + STANDOFF
- 5 - 4-40 UNC INSERT + BOARD SPACER + 4 PRONG BOARDLOCKS
- 6 - 4-40 UNC INSERT + BOARD SPACER + STANDOFF + 4 PRONG BOARDLOCKS

SHELL PLATING CODE:

N - NICKEL
 T - TIN

MATERIAL CODE:

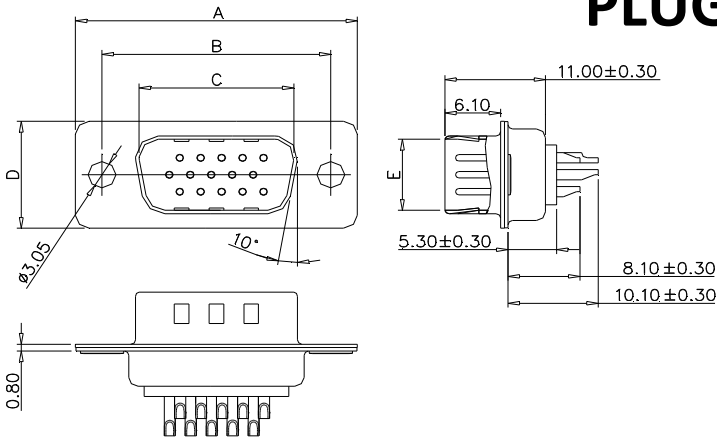
B- BLACK
 W - WHITE



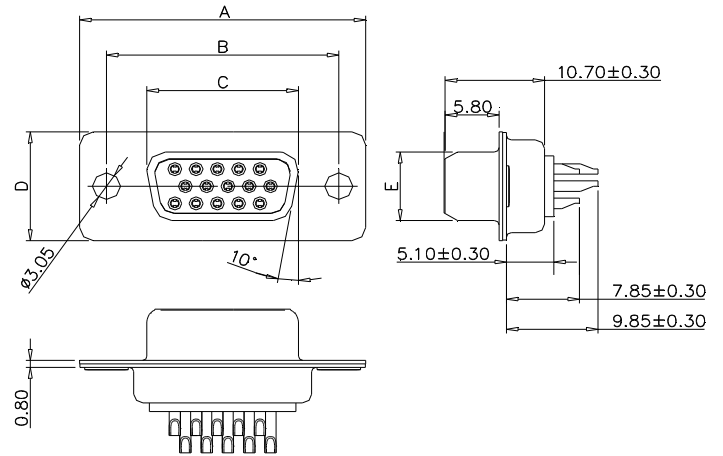
SERIES 637M/638M HD D-SUB CONNECTOR

Plug and Receptacle, Vertical High Density, PCB Mount, Metal Body

PLUG

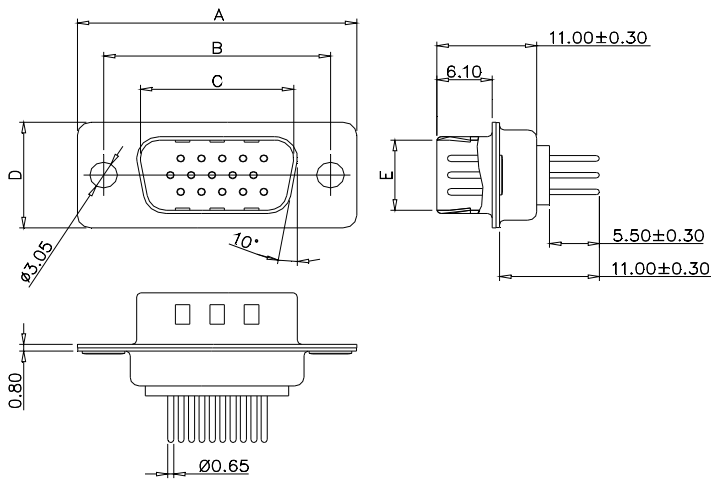


| No. of pos. | A | B | C | D | E |
|-------------|-------|-------|-------|-------|------|
| 15 | 30.80 | 25.00 | 16.90 | 12.50 | 8.30 |
| 26 | 39.20 | 33.30 | 25.25 | 12.50 | 8.30 |
| 44 | 53.05 | 47.05 | 38.95 | 12.50 | 8.30 |
| 62 | 69.40 | 63.50 | 55.40 | 12.50 | 8.30 |

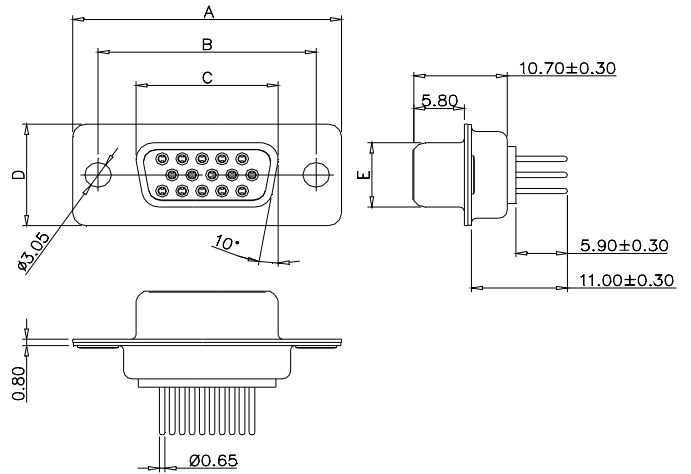


| No. of pos. | A | B | C | D | E |
|-------------|-------|-------|-------|-------|------|
| 15 | 30.80 | 25.00 | 16.30 | 12.50 | 7.90 |
| 26 | 39.20 | 33.30 | 24.60 | 12.50 | 7.90 |
| 44 | 53.05 | 47.05 | 38.40 | 12.50 | 7.90 |
| 62 | 69.40 | 63.50 | 54.80 | 12.50 | 7.90 |

RECEPTACLE



| No. of pos. | A | B | C | D | E |
|-------------|-------|-------|-------|-------|------|
| 15 | 30.80 | 25.00 | 16.90 | 12.50 | 8.30 |
| 26 | 39.20 | 33.30 | 25.25 | 12.50 | 8.30 |
| 44 | 53.05 | 47.05 | 38.95 | 12.50 | 8.30 |
| 62 | 69.40 | 63.50 | 55.40 | 12.50 | 8.30 |



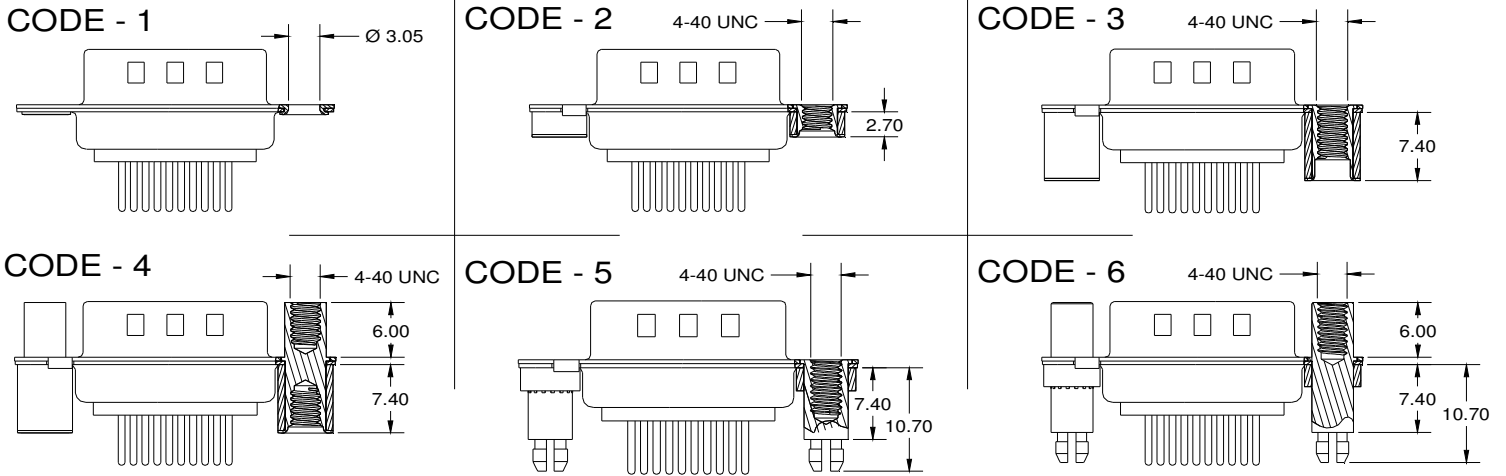
| No. of pos. | A | B | C | D | E |
|-------------|-------|-------|-------|-------|------|
| 15 | 30.80 | 25.00 | 16.30 | 12.50 | 7.90 |
| 26 | 39.20 | 33.30 | 24.60 | 12.50 | 7.90 |
| 44 | 53.05 | 47.05 | 38.40 | 12.50 | 7.90 |
| 62 | 69.40 | 63.50 | 54.80 | 12.50 | 7.90 |



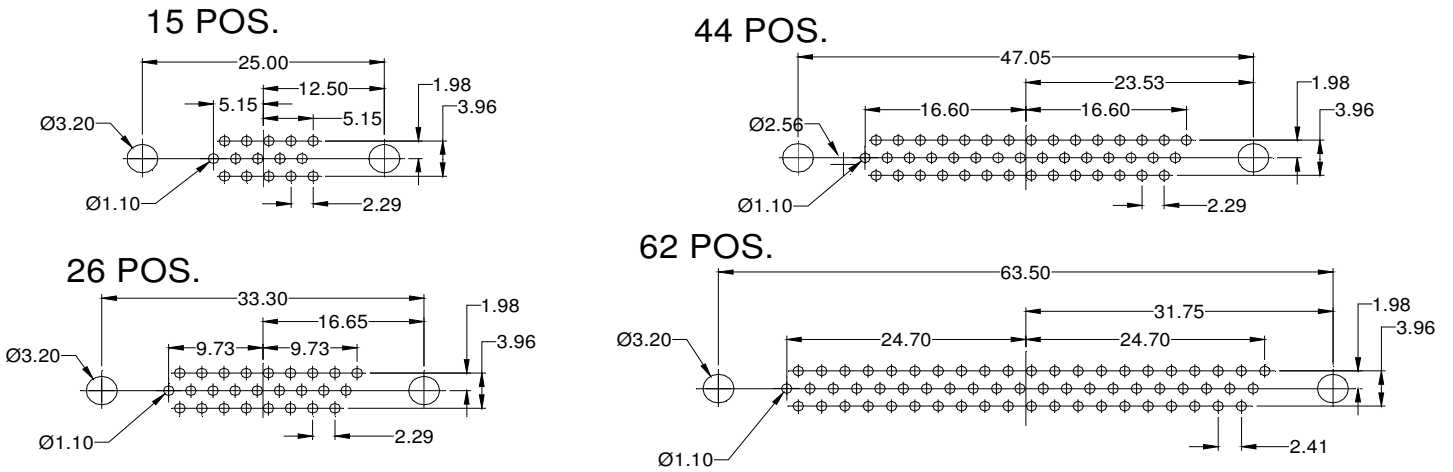
SERIES 637M/638M HD D-SUB CONNECTOR

Plug and Receptacle, Vertical High Density, PCB Mount, Metal Body

MOUNTING & GROUNDING OPTIONS



PCB LAYOUT (PLUG)



PCB LAYOUT (RECEPTACLE)

