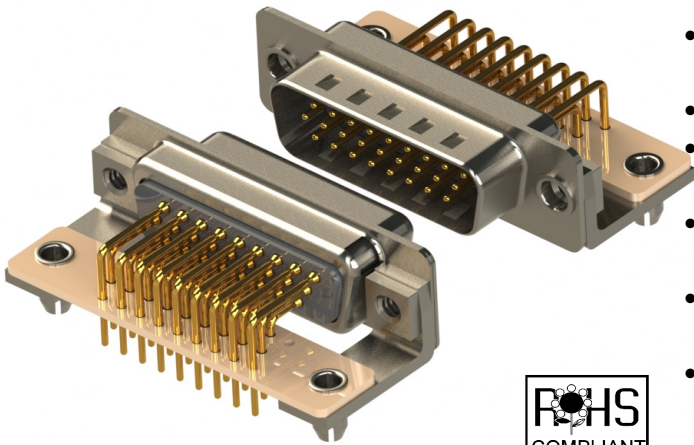




SERIES 633M/634M: HD D-SUB CONNECTOR

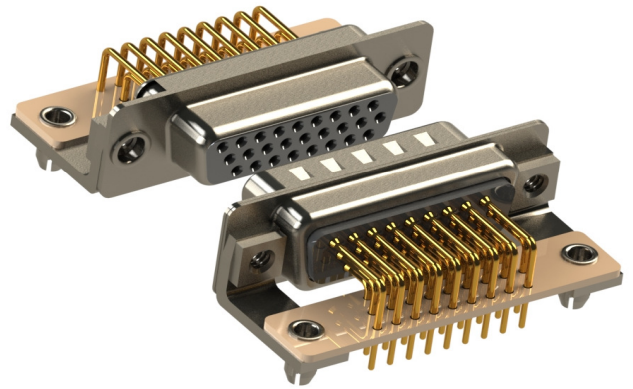
Plug and Receptacle, Right Angle, High Density, .350"(8.89mm) Footprint



- High Density Three Contact Rows with .350"(8.89mm) Footprint Right Angle Bend with Machined Contacts
- .090"(2.29mm) Contact Spacing 0.078"(1.98mm) Row Spacing
- Plug and Receptacle in 15, 26, 44 or 62 Contact Sizes
- Pin and Socket Contact Mating Design with P.C. Tail Termination
- Metal Shell Provides EMI/RFI Shielding, Plug Shell Indents provide Grounding and Additional Mating Retention
- Grounding Features include Ground Plates and Four Prong Boardlock for Exceptional Retention to P.C. Board
- Mounting Options for Panel Mount or Connector Mating include Through Hole, Threaded Inserts and Threaded Standoffs
- D-Shaped Connector Mating Outline provides Polarization

Specifications:

Insulator Material	PA9T, UL 94V-0, Color: Black or White (PA6T, UL 94V-0 for 62 Contacts)
Contact Material	Copper Alloy
Contact Plating	Gold Plating Over Nickel
Shell Material	Nickel Plated Steel
Current Rating	5Amps Per Contact
Contact Resistance	10 Milliohms MAX
Insulation Resistance	5000 Megohms MIN
Dielectric Voltage	1000V AC rms at Sea Level
Operating Temp.	-55°C To +125°C



Ordering Code:

634-M15-263-BN1

SERIES:

633: PLUG (PIN)

634: RECEPTACLE (SOCKET)

MACHINED CONTACTS

NO. OF CONTACTS:

015 - 15 CONTACTS 026 - 26 CONTACTS

044 - 44 CONTACTS 062 - 62 CONTACTS

CONTACT FINISH CODE:

2 - GOLD FLASH PLATING

3 - 15 MICROINCHES OF GOLD PLATING

6 - 30 MICROINCHES OF GOLD PLATING

CONTACT CODE:

63 - STANDARD CONTACT TAIL LENGTH(3.50 ±0.40)

MOUNTING & GROUNDING OPTIONS:

1 - Ø3.05 THRU HOLE

2 - 4-40 UNC INSERT

3 - 4-40 UNC INSERT + STABILIZER PCB + 4 PRONG BOARD LOCK

4 - 4-40 UNC INSERT + STABILIZER PCB + Ø3.20 DIA HOLE

5 - 4-40 UNC STANDOFF + STABILIZER PCB + 4 PRONG BOARD LOCK

6 - 4-40 UNC STANDOFF + STABILIZER PCB + Ø3.20 DIA HOLE

SHELL PLATING CODE:

N - NICKEL

T - TIN

MATERIAL CODE:

B - BLACK

W - WHITE

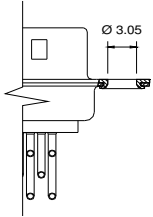


SERIES 633M/634M: HD D-SUB CONNECTOR

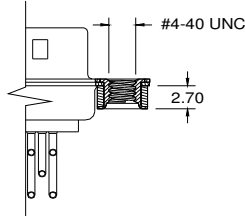
Plug and Receptacle, Right Angle, High Density .350" (8.89mm) Footprint

MOUNTING & GROUNDING OPTIONS

CODE - 1
THRU HOLE

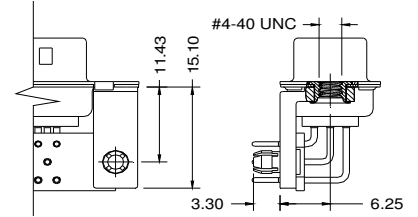


CODE - 2
4-40 UNC INSERT



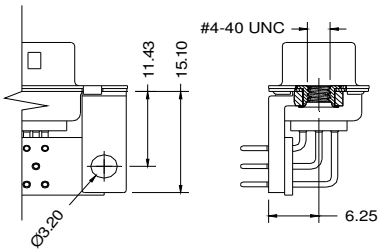
CODE - 3

4-40 UNC INSERT+PCB + BOARDLOCK



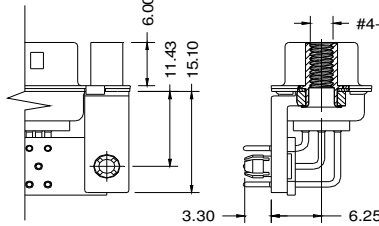
CODE - 4

4-40 UNC INSERT+PCB + THRU HOLE



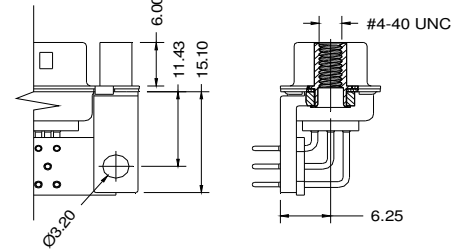
CODE - 5

4-40 UNC STANDOFF+PCB + BOARDLOCK

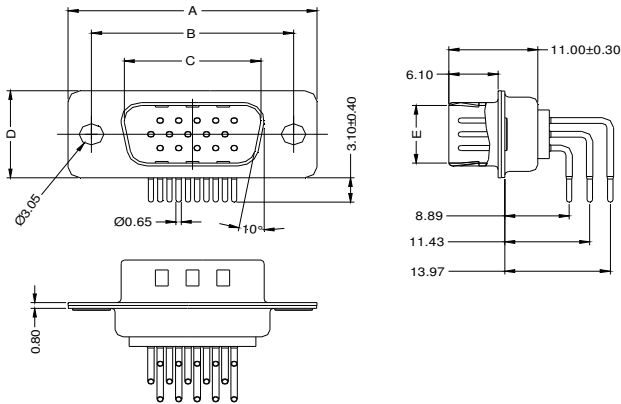


CODE - 6

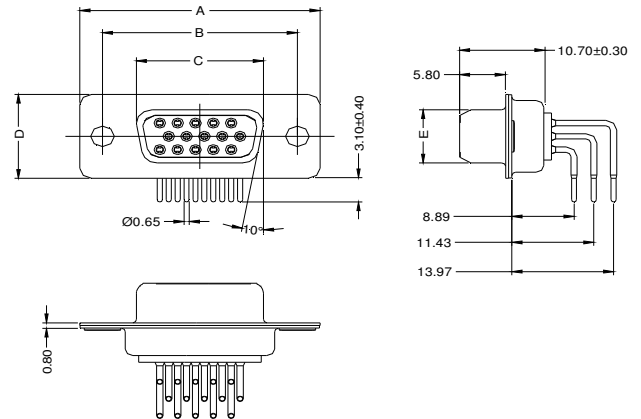
4-40 UNC STANDOFF+PCB + THRU HOLE



PLUG



RECEPTACLE



No. of pos.	A	B	C	D	E
15	30.80	25.00	16.90	12.50	8.30
26	39.20	33.30	25.25	12.50	8.30
44	53.05	47.05	38.95	12.50	8.30
62	69.40	63.50	55.40	12.50	8.30

No. of pos.	A	B	C	D	E
15	30.80	25.00	16.30	12.50	7.90
26	39.20	33.30	24.60	12.50	7.90
44	53.05	47.05	38.40	12.50	7.90
62	69.40	63.50	54.80	12.50	7.90



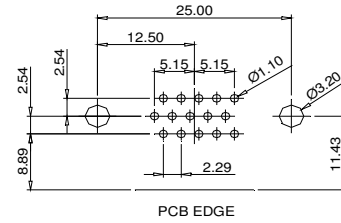
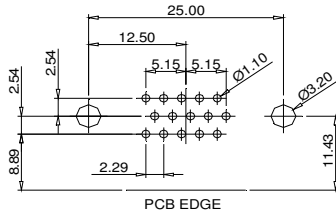
SERIES 633M/634M: HD D-SUB CONNECTOR

Plug and Receptacle, Right Angle, High Density .350" (8.89mm) Footprint

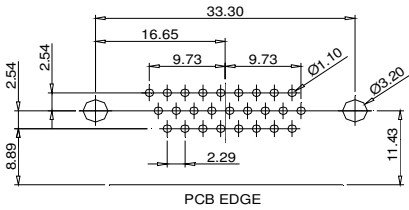
PCB LAYOUT FOR RECEPTACLE

PCB LAYOUT FOR PLUG

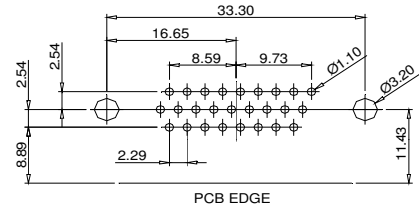
15 Pos



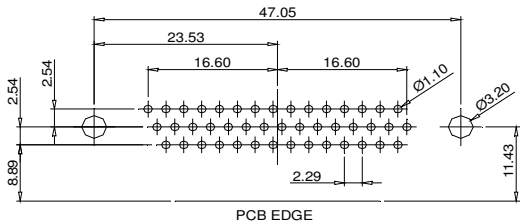
26 Pos



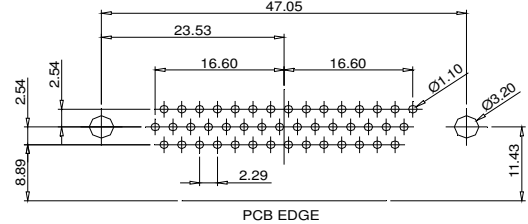
26 Pos



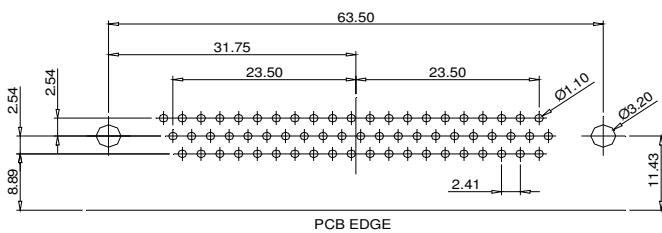
44 Pos



44 Pos



62 Pos



62 Pos

