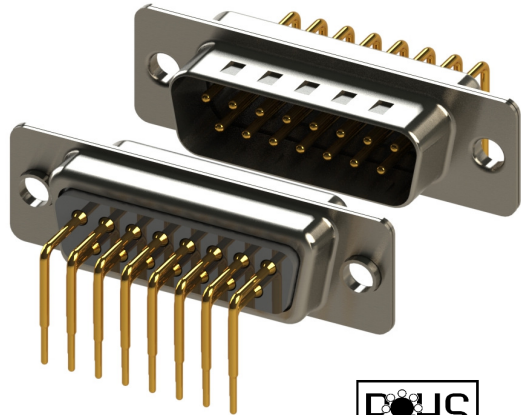




SERIES 629M/630M: D-SUB CONNECTOR

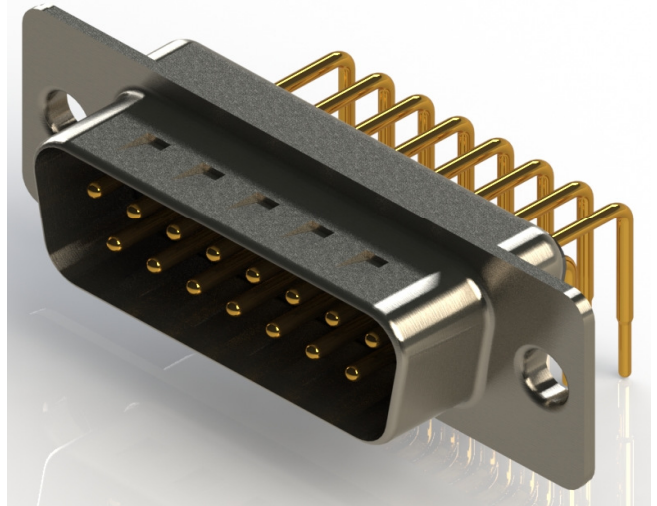
Plug and Receptacle, Right Angle, .370"(9.40mm) Footprint



- Two Contact Rows with .370"(9.40mm) Footprint Right Angle Bend D-Sub with Machined Contacts
- .109"(2.77mm) Contact Spacing x .112"(2.84mm) Row Spacing
- Plug and Receptacle in 9, 15, 25, 37 or 50 Contact Sizes
- Pin and Socket Contact Mating Design with P.C. Tail Termination
- Metal Shell Provides EMI/RFI Shielding, Plug Shell Indents provide Grounding and Additional Mating Retention
- Grounding Features include Ground Brackets with Four Prong Boardlock for Exceptional Retention to P.C. Board
- Mounting Options for Panel Mount or Connector Mating include Through Hole, Threaded Inserts and Threaded Standoffs
- Insulation Housing are offered in different colors, Black, White, Green and Blue
- D-Shaped Connector Mating Outline provides Polarization

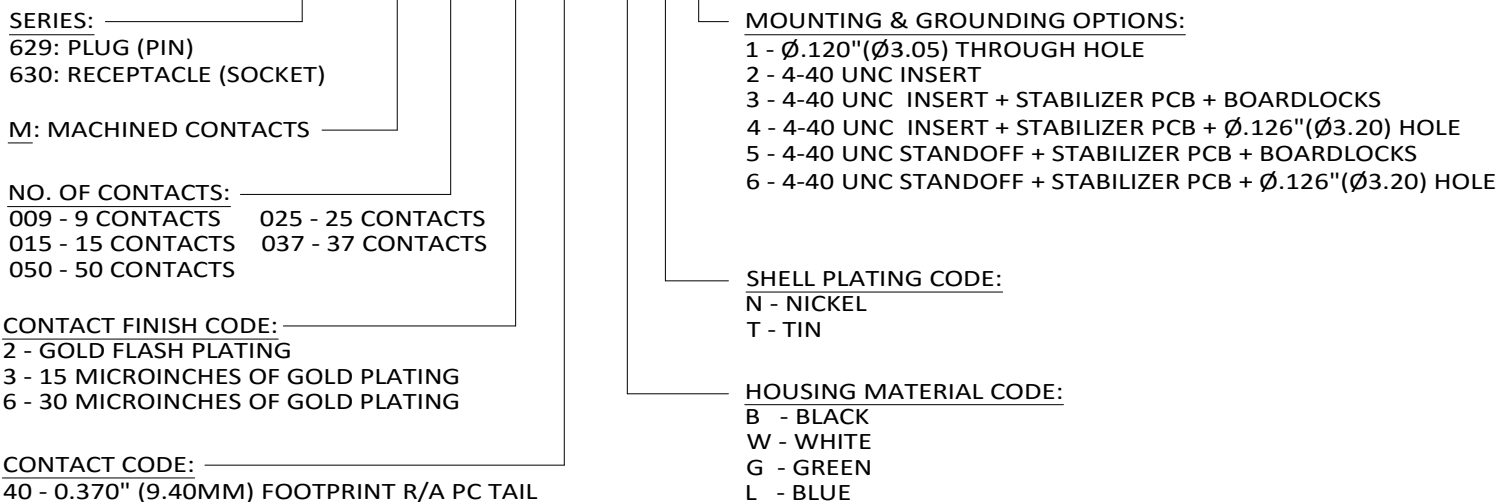
Specifications:

Insulator Material	PA6T, UL 94V-0, Color: Black, White, Blue or Green
Contact Material	Precision Machined Copper Alloy
Contact Plating	Gold Plating over Nickel All Over
Shell Material	Nickel Plated Steel (Optional Tin Plating)
Current Rating	5A Per Contact
Contact Resistance	10 Milliohms MAX
Insulation Resistance	5000 Megohms MIN
Dielectric Voltage	1000V AC rms at Sea Level
Operating Temp.	-55°C To +125°C



Ordering Code:

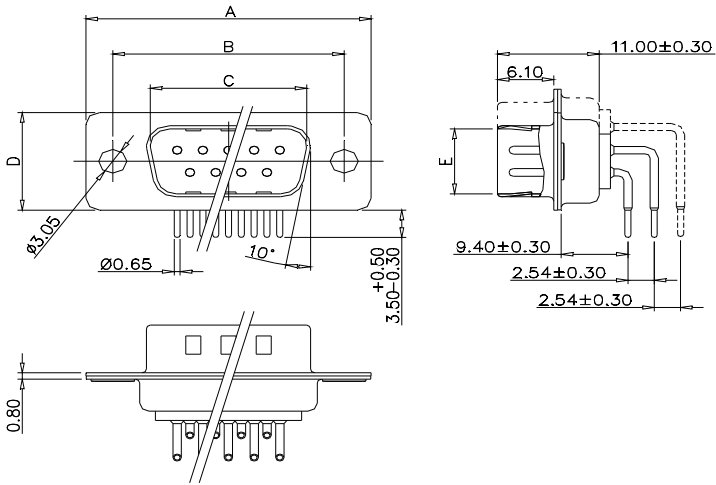
629-M25-240-BN3



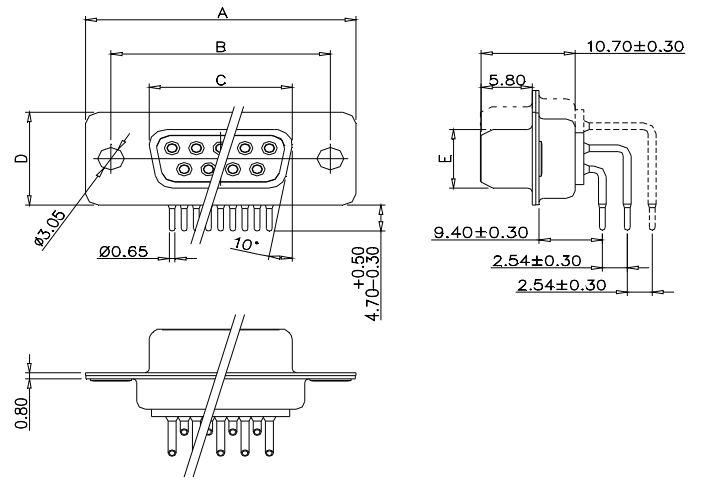


SERIES 629M/630M: D-SUB CONNECTOR

Plug and Receptacle, Right Angle, .370" (9.40mm) Footprint



No. of Pos.	A	B	C	D	E
09	30.80	25.00	16.90	12.50	8.30
15	39.20	33.30	25.25	12.50	8.30
25	53.05	47.05	38.95	12.50	8.30
37	69.40	63.50	55.40	12.50	8.30
50	67.00	61.00	52.80	15.30	11.15

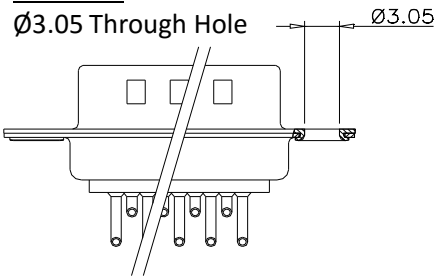


No. of Pos.	A	B	C	D	E
09	30.80	25.00	16.30	12.50	7.90
15	39.20	33.30	24.60	12.50	7.90
25	53.05	47.05	38.40	12.50	7.90
37	69.40	63.50	54.80	12.50	7.90
50	67.00	61.00	52.20	15.30	10.90

MOUNTING & GROUNDING OPTIONS:

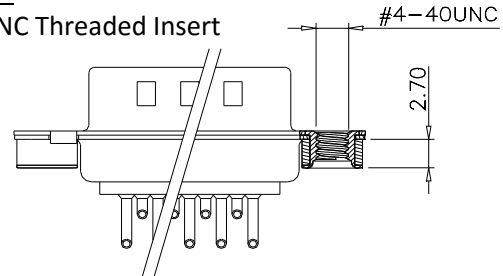
CODE - 1

Ø3.05 Through Hole



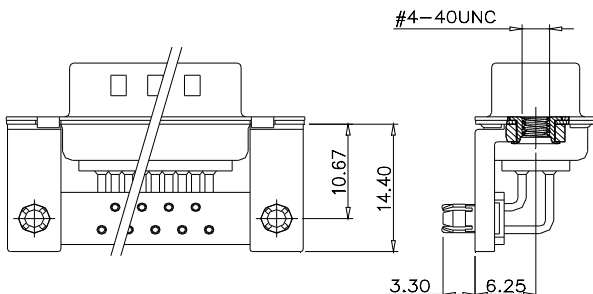
CODE - 2

#4-40 UNC Threaded Insert



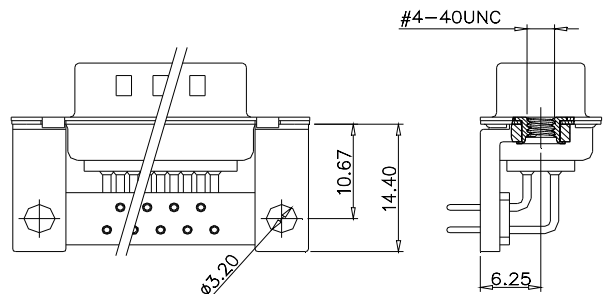
CODE - 3

#4-40 UNC INSERT + STABILIZER PCB + BOARDLOCKS



CODE - 4

#4-40 UNC INSERT + STABILIZER PCB + Ø3.20 HOLE





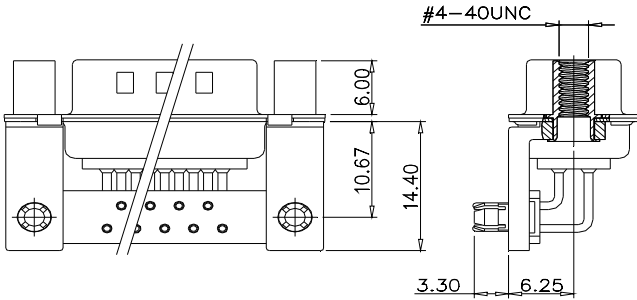
SERIES 629M/630M: D-SUB CONNECTOR

Plug and Receptacle, Right Angle, .370" (9.40mm) Footprint

MOUNTING & GROUNDING OPTIONS:

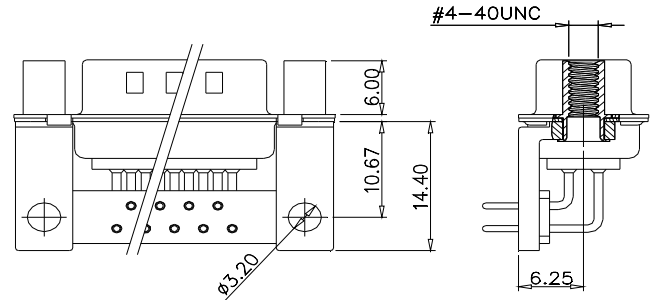
CODE - 5

#4-40 UNC STANDOFF + STABILIZER PCB + BOARDLOCKS



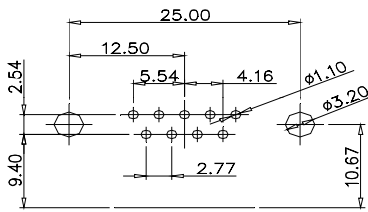
CODE - 6

#4-40 UNC STANDOFF + STABILIZER PCB + Ø3.20 HOLE



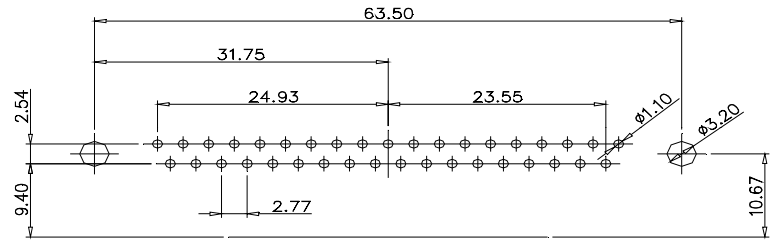
RECOMMENDED PCB LAYOUT

9 pos



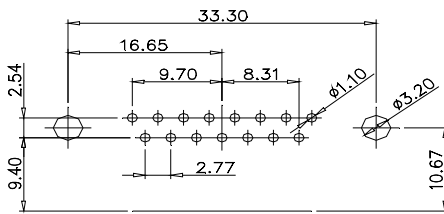
PCB EDGE

37 pos



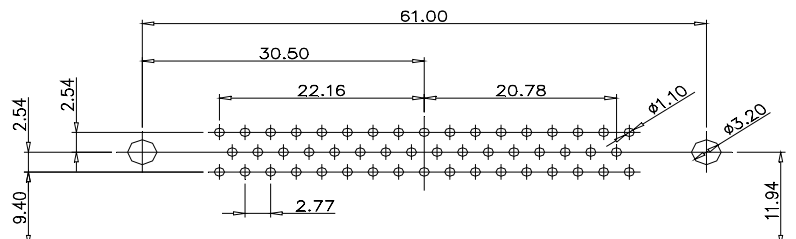
PCB EDGE

15 pos



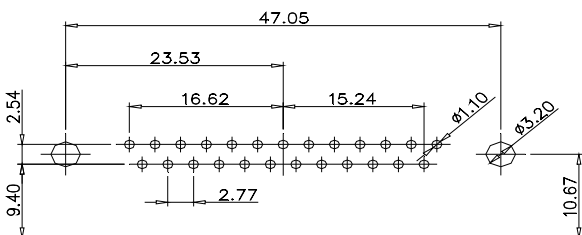
PCB EDGE

50 pos



PCB EDGE

25 pos



PCB EDGE