



# SERIES 627M/628M: D-SUB CONNECTOR

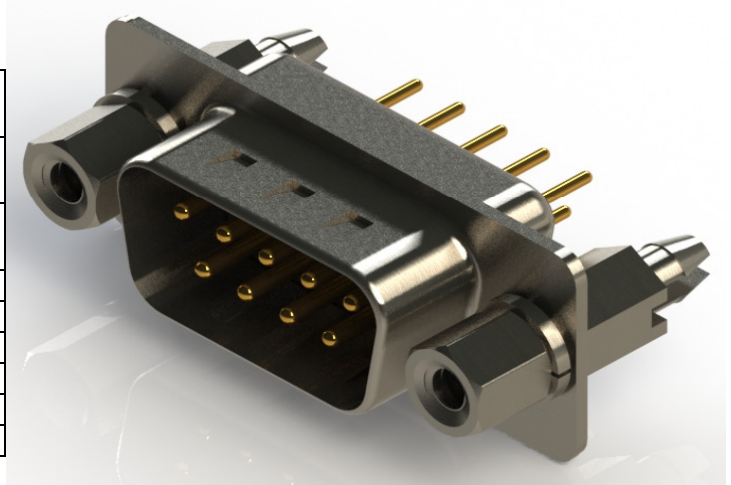
## Plug and Receptacle, Straight, PCB Mount & Solder Cup



- Standard Density, Straight D-Sub with Machined Contacts
- .109"(2.77mm) Contact Spacing x .112"(2.84mm) Row Spacing
- Plug and Receptacle in 9, 15, 25, 37 or 50 Contact Sizes
- Pin and Socket Contact Mating Design with P.C. Tail, and Solder Cup Termination
- Metal Shell Provides EMI/RFI Shielding, Plug Shell Indents provide Grounding and Additional Mating Retention
- Grounding Features include Four Prong Boardlock for Exceptional Retention to P.C. Board
- Mounting Options for Panel Mount or Connector Mating include Through Hole, Threaded Inserts and Threaded Standoffs
- Insulation Housing are offered in different colors, Black, White, Green and Blue
- D-Shaped Connector Mating Outline provides Polarization

### Specifications:

Insulator Material	PA6T, UL 94V-0, Color: Black, White, Blue or Green
Contact Material	Precision Machined Copper Alloy
Contact Plating	Gold Plating over Nickel All Over
Shell Material	Nickel Plated Steel (Optional Tin Plating)
Current Rating	5A Per Contact
Contact Resistance	10 Milliohms MAX
Insulation Resistance	5000 Megohms MIN
Dielectric Voltage	1000V AC rms at Sea Level
Operating Temp.	-55°C To +125°C



### Ordering Code:

## 627-M25-220-BN3

#### SERIES:

627: PLUG (PIN)

628: RECEPTACLE (SOCKET)

M: MACHINED CONTACTS

#### NO. OF CONTACTS:

009 - 9 CONTACTS

025 - 25 CONTACTS

015 - 15 CONTACTS

037 - 37 CONTACTS

050 - 50 CONTACTS

#### CONTACT FINISH CODE:

2 - GOLD FLASH PLATING

3 - 15 MICROINCHES OF GOLD PLATING

6 - 30 MICROINCHES OF GOLD PLATING

#### CONTACT CODE:

20 - .224"(5.70mm) PC TAIL (ONLY FOR PLUG)

21 - .232"(5.90mm) PC TAIL (ONLY FOR RECEPTACLE)

22 - SOLDER CUP TAIL

#### MOUNTING & GROUNDING OPTIONS:

1 -  $\phi$ .120"( $\phi$ 3.05MM) THROUGH HOLE

2 - 4-40 UNC, 2.7MM THREADED INSERT

#### (NOTE: CODES 3, 4, 5, & 6 ARE FOR PC TAIL ONLY)

3 - 4-40 UNC THREADED BOARDSPACER

4 - 4-40 UNC THREADED STANDOFF WITH THREADED BOARDSPACER

5 - 4-40 UNC THREADED BOARDSPACER WITH BOARDLOCKS

6 - 4-40 UNC THREADED STANDOFF WITH BOARDSPACER & BOARDLOCKS

#### SHELL PLATING CODE:

N - NICKEL

T - TIN

#### HOUSING MATERIAL CODE:

B - BLACK

W - WHITE

G - GREEN

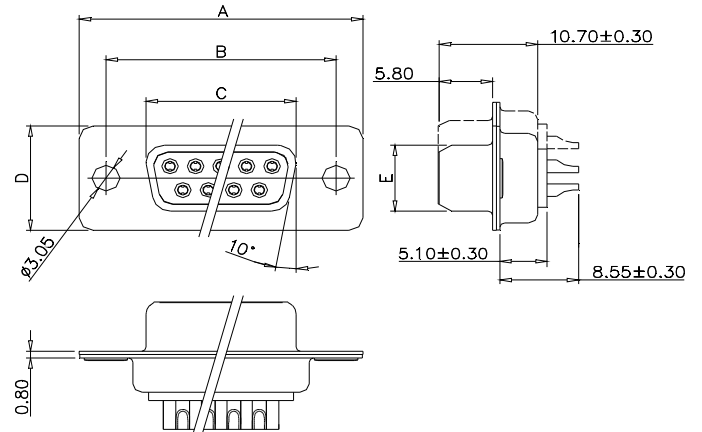
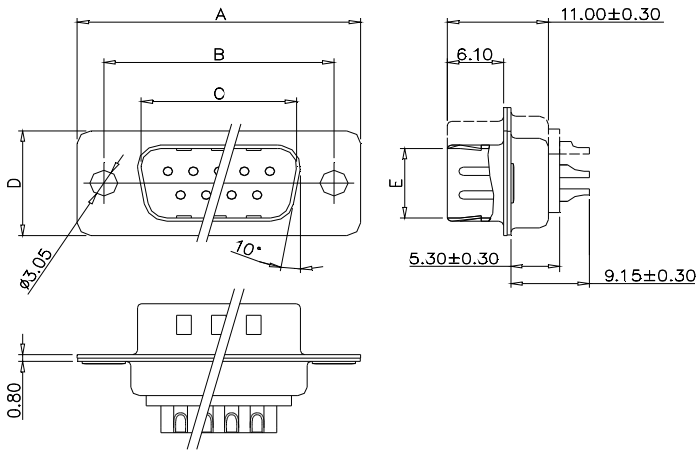
L - BLUE



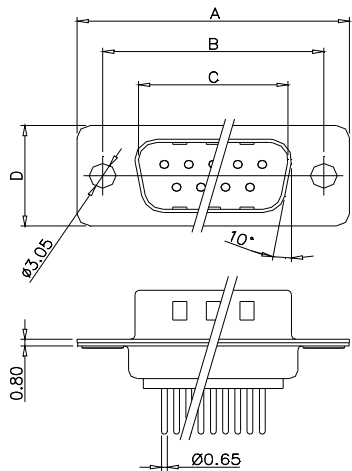
# SERIES 627M/628M: D-SUB CONNECTOR

Plug and Receptacle, Straight, PCB Mount & Solder Cup

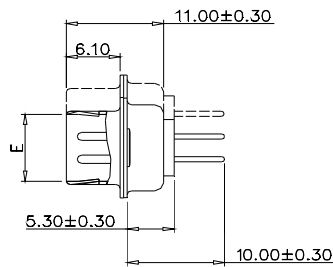
## SOLDER CUP



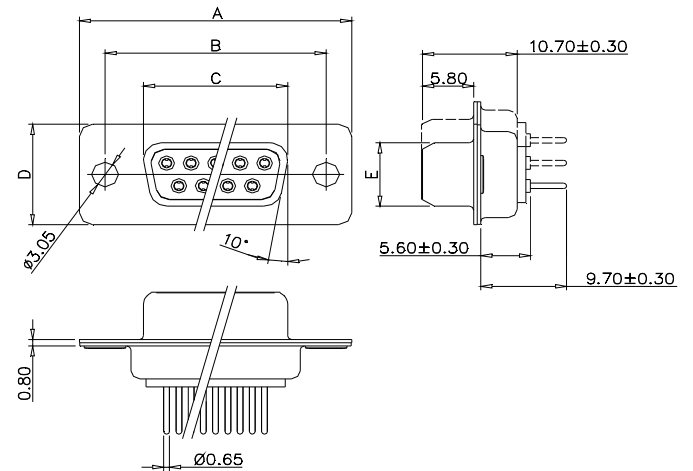
## PC TAIL



## PLUG



## RECEPTACLE



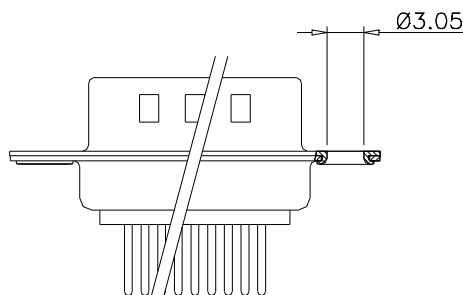
No. of Pos.	A	B	C	D	E
09	30.80	25.00	16.90	12.50	8.30
15	39.20	33.30	25.25	12.50	8.30
25	53.05	47.05	38.95	12.50	8.30
37	69.40	63.50	55.40	12.50	8.30
50	67.00	61.00	52.80	15.30	11.15

No. of Pos.	A	B	C	D	E
09	30.80	25.00	16.30	12.50	7.90
15	39.20	33.30	24.60	12.50	7.90
25	53.05	47.05	38.40	12.50	7.90
37	69.40	63.50	54.80	12.50	7.90
50	67.00	61.00	52.20	15.30	10.90

## MOUNTING & GROUNDING OPTIONS:

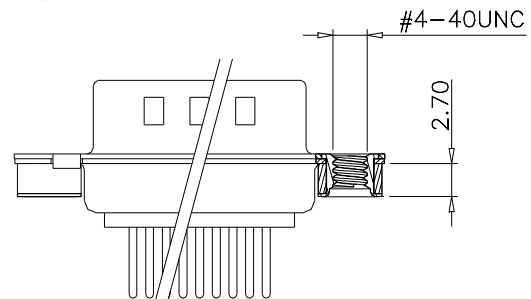
### CODE - 1

Ø3.05 Through Hole



### CODE - 2

#4-40 UNC, 2.7mm Threaded Insert





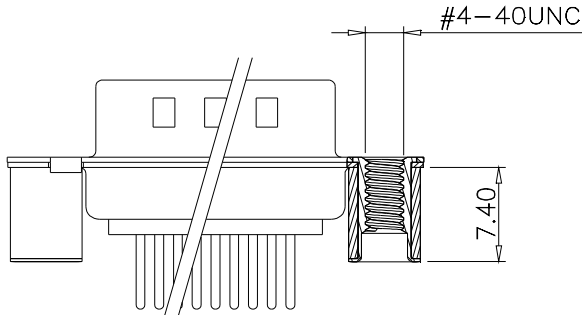
# SERIES 627M/628M: D-SUB CONNECTOR

Plug and Receptacle, Straight, PCB Mount & Solder Cup

## MOUNTING & GROUNDING OPTIONS: (ONLY FOR PC TAIL TERMINATION)

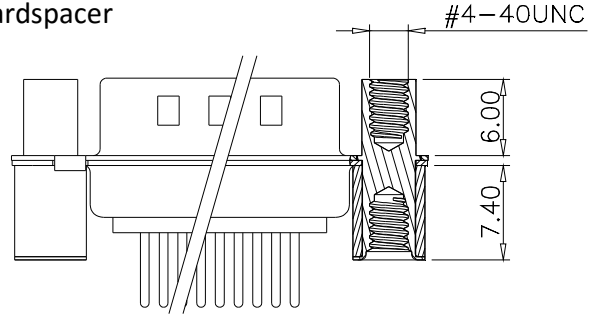
### CODE - 3

#4-40 UNC Threaded Boardspacer



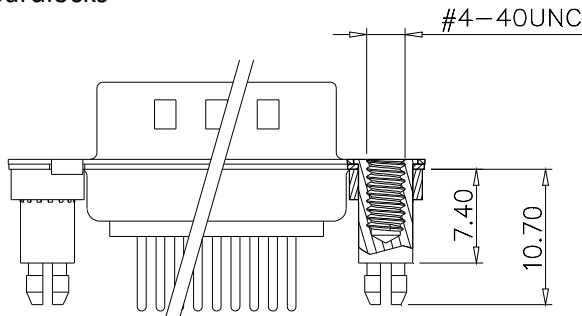
### CODE - 4

#4-40 UNC Threaded Standoff with Threaded Boardspacer



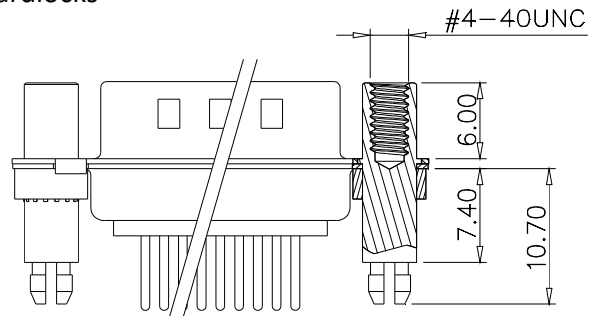
### CODE - 5

#4-40 UNC Threaded Boardspacer with Boardlocks

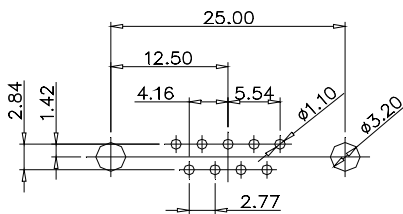


### CODE - 6

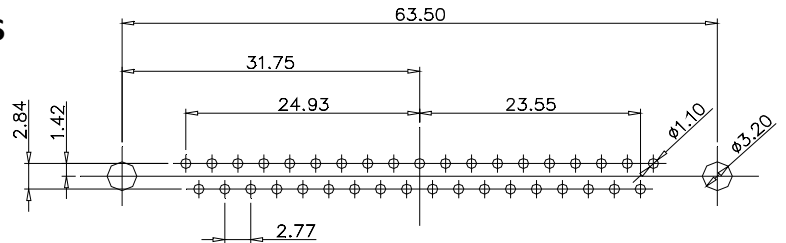
#4-40 UNC Threaded Standoff with Boardspacer & Boardlocks



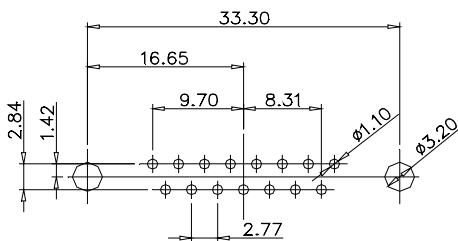
**9 POS**



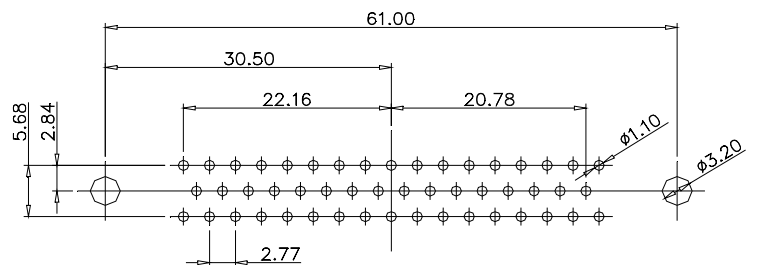
**37 POS**



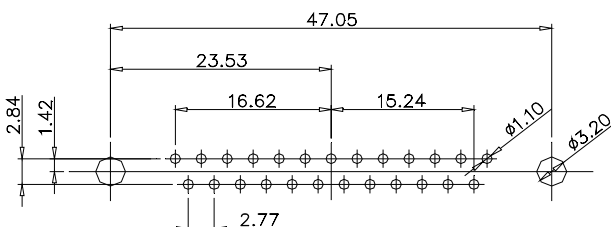
**15 POS**



**50 POS**



**25 POS**



## RECOMMENDED PCB LAYOUT