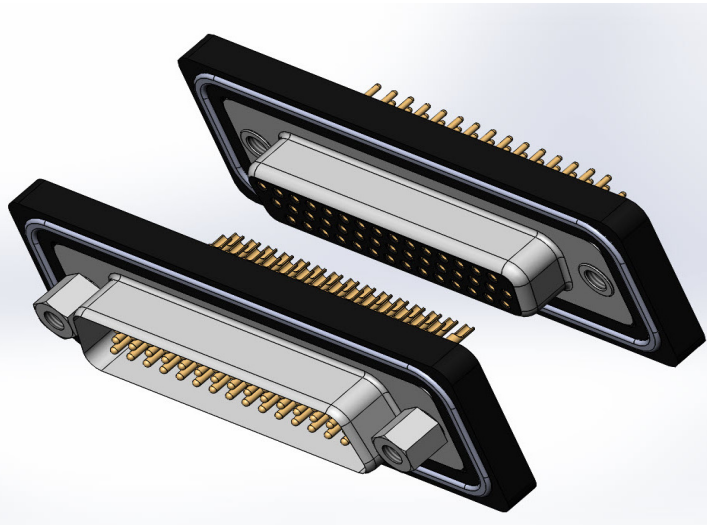




SERIES 600W

WATERPROOF D-SUB HIGH DENSITY



FEATURES:

Waterproof High Density D-Subs are available in 15, 26 and 44 pin sizes

Contact Terminations are available in:

90° Right Angle PCB Tail

180° Straight or Vertical PCB Tail

Solder Cup Tail

Material: PBT Thermoplastic with 30% Glass Filled,
UL 94V-0 Rated, Black color

Watertight Frame: PBT Thermoplastic with 30% Glass Filled,
UL 94V-0 Rated, Black Color

Shell: Steel, Nickel Plated

O-Ring: Silicone

Epoxy Sealant: Epoxy

Contact Material: Copper Alloy

SPECIFICATIONS:

Contact Current Rating: **3.0 A**

Contact Resistance: 10 milliohm maximum

Dielectric Withstanding Voltage: 1000V AC for 1 Minute

Insulation Resistance: 5000 Megohms minimum

Temperature Rating: -25°C ~ +85°C

Degree of Protection: IP67 as per IEC60529

Example Part Number:

633-W15-221-012

SERIES:
 PLUG, Right Angle, 9.7 [0.383], High Density Size 633
 Receptacle, Right Angle, 9.7 [0.383], High Density Size 634
 PLUG, Vertical PCB Mount, High Density Size 637
 Receptacle, Vertical PCB Mount, High Density Size 638

CROSS / REF:
 EDAC CODE
 WATERPROOF W

NO. OF CONTACTS:
 15 CONTACT PINS 15
 26 CONTACT PINS 26
 44 CONTACT PINS 44

CONTACT PLATING
 Gold Flash Plating over Nickel 2
 15 µIN of Gold Plating over Nickel 3
 30 µIN of Gold Plating over Nickel 6

MOUNTING OPTION:
 2 #4-40 UNC THREADED HOLE

**NOTE: ALL CONNECTORS ARE SHIPPED WITH
 #4-40 UNC HEXAGON SCREWS
 (Packed Separately)**

SHELL OPTIONS:
 1 NICKEL PLATED

INSULATOR COLOR:
 0 BLACK

CONTACT CODE:
 21 PC TAIL FOR HIGH DENSITY TYPE D-SUB
 22 SOLDER CUP TERMINATION
 62 RIGHT ANGLE TAIL FOR HIGH DENSITY TYPE D-SUB